

A

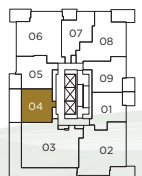
1 BEDROOM, 1 BATH

INTERIOR 487 SQ. FT.
EXTERIOR 166 SQ. FT.
TOTAL 653 SQ. FT.

JINJU



The developer reserves the right to make changes and modifications to the information contained herein. Floorplans and floorplates are subject to change without notice. Please contact a developer sales representative for details. The developer may also make such further development modifications as are permitted by the disclosure statement, as may be amended, the contract of purchase and sale between a purchaser and developer (if applicable), or otherwise. E. & O.E.



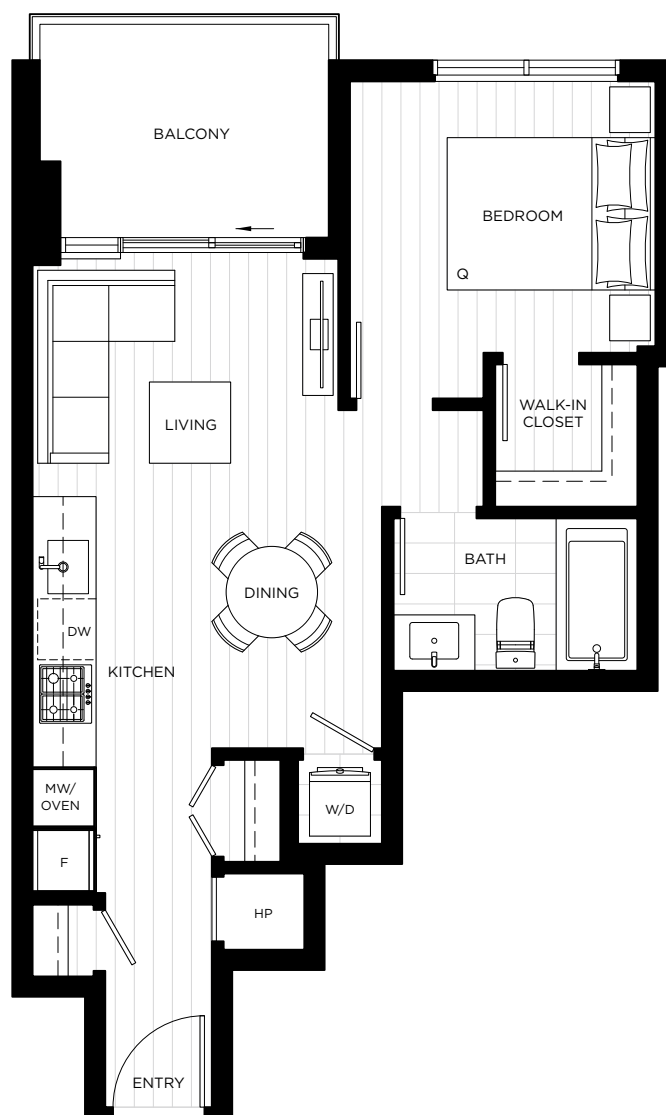
LEVEL 41

A1

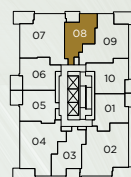
1 BEDROOM, 1 BATH

INTERIOR 494 SQ. FT.
EXTERIOR 72 SQ. FT.
TOTAL 566 SQ. FT.

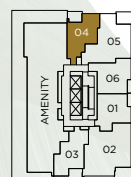
JINJU



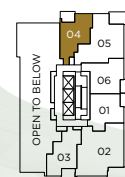
The developer reserves the right to make changes and modifications to the information contained herein. Floorplans and floorplates are subject to change without notice. Please contact a developer sales representative for details. The developer may also make such further development modifications as are permitted by the disclosure statement, as may be amended, the contract of purchase and sale between a purchaser and developer (if applicable), or otherwise. E. & O.E.



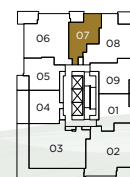
LEVELS 9-27 & 30-40



LEVEL 28



LEVEL 29



LEVEL 41

A2

1 BEDROOM, 1 BATH

INTERIOR 499 SQ. FT.
EXTERIOR 78 SQ. FT.
TOTAL 577 SQ. FT.

JINJU

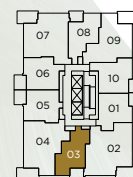


Anthem

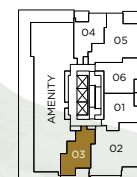
0 1 2 3 4 5 10 FEET



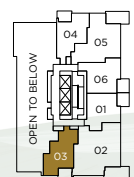
The developer reserves the right to make changes and modifications to the information contained herein. Floorplans and floorplates are subject to change without notice. Please contact a developer sales representative for details. The developer may also make such further development modifications as are permitted by the disclosure statement, as may be amended, the contract of purchase and sale between a purchaser and developer (if applicable), or otherwise. E. & O.E.



LEVELS 9-27 & 30-40



LEVEL 28



LEVEL 29

A3

1 BEDROOM, 1 BATH

INTERIOR 501 SQ. FT.
EXTERIOR 78 SQ. FT.
TOTAL 579 SQ. FT.

JINJU

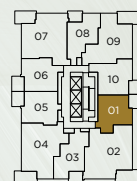


Anthem

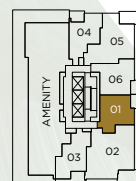
0 1 2 3 4 5 10 FEET



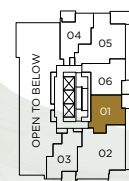
The developer reserves the right to make changes and modifications to the information contained herein. Floorplans and floorplates are subject to change without notice. Please contact a developer sales representative for details. The developer may also make such further development modifications as are permitted by the disclosure statement, as may be amended, the contract of purchase and sale between a purchaser and developer (if applicable), or otherwise. E. & O.E.



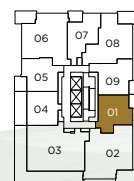
LEVELS 9-27 & 30-40



LEVEL 28



LEVEL 29



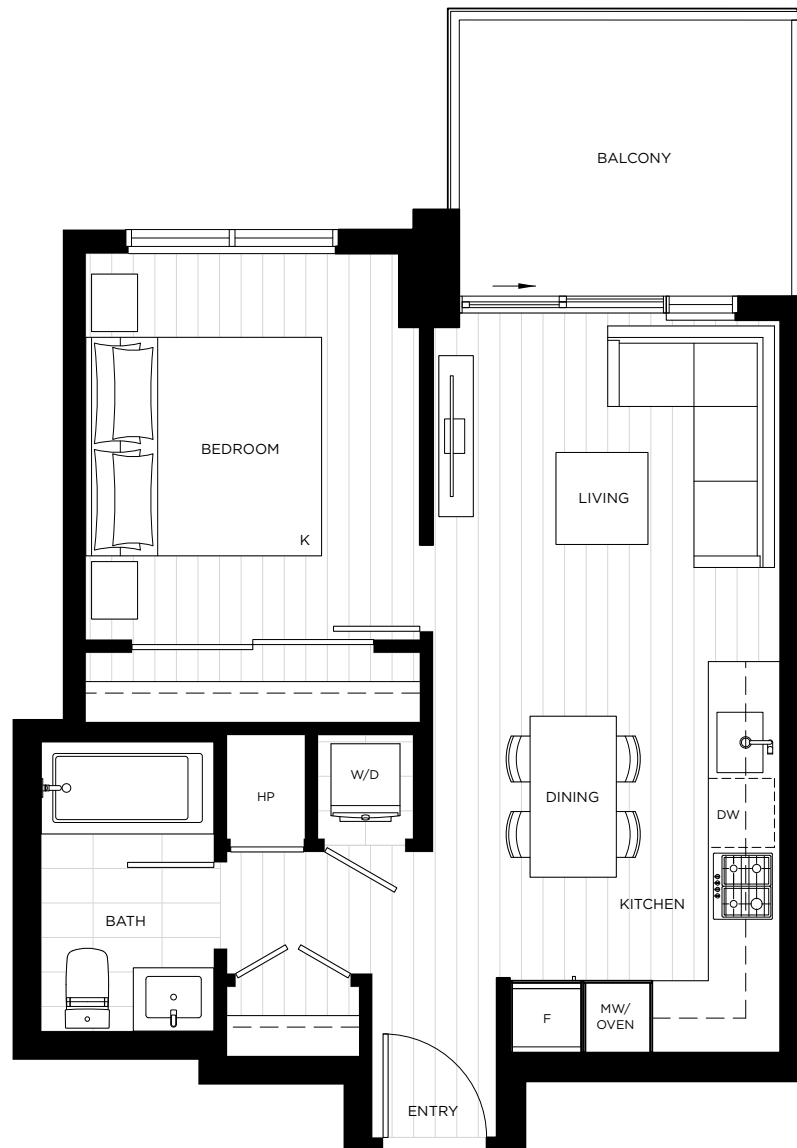
LEVEL 41

A5

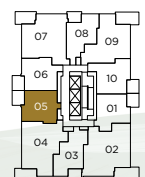
1 BEDROOM, 1 BATH

INTERIOR 518 SQ. FT.
EXTERIOR 83 SQ. FT.
TOTAL 601 SQ. FT.

JINJU



The developer reserves the right to make changes and modifications to the information contained herein. Floorplans and floorplates are subject to change without notice. Please contact a developer sales representative for details. The developer may also make such further development modifications as are permitted by the disclosure statement, as may be amended, the contract of purchase and sale between a purchaser and developer (if applicable), or otherwise, E. & O.E.



LEVELS 9-27 & 30-40

A6

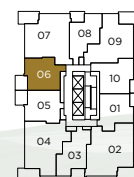
1 BEDROOM, 1 BATH

INTERIOR 531 SQ. FT.
EXTERIOR 83 SQ. FT.
TOTAL 614 SQ. FT.

JINJU



The developer reserves the right to make changes and modifications to the information contained herein. Floorplans and floorplates are subject to change without notice. Please contact a developer sales representative for details. The developer may also make such further development modifications as are permitted by the disclosure statement, as may be amended, the contract of purchase and sale between a purchaser and developer (if applicable), or otherwise, E. & O.E.



LEVELS 9-27 & 30-40

A7

1 BEDROOM, 1 BATH

INTERIOR 535 SQ. FT.
EXTERIOR 80 SQ. FT.
TOTAL 615 SQ. FT.

JINJU

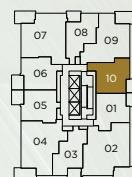


Anthem

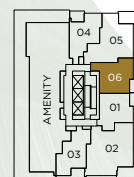
0 1 2 3 4 5 10 FEET



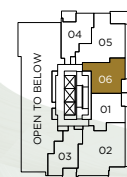
The developer reserves the right to make changes and modifications to the information contained herein. Floorplans and floorplates are subject to change without notice. Please contact a developer sales representative for details. The developer may also make such further development modifications as are permitted by the disclosure statement, as may be amended, the contract of purchase and sale between a purchaser and developer (if applicable), or otherwise. E. & O.E.



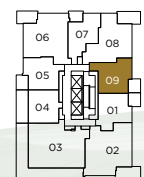
LEVELS 9-27 & 30-40



LEVEL 28



LEVEL 29



LEVEL 41

B1

2 BEDROOM, 2 BATH

INTERIOR 759 SQ. FT.
EXTERIOR 131 SQ. FT.
TOTAL 890 SQ. FT.

JINJU

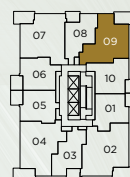


Anthem

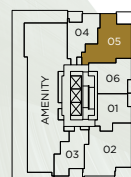
0 1 2 3 4 5 10 FEET



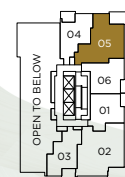
The developer reserves the right to make changes and modifications to the information contained herein. Floorplans and floorplates are subject to change without notice. Please contact a developer sales representative for details. The developer may also make such further development modifications as are permitted by the disclosure statement, as may be amended, the contract of purchase and sale between a purchaser and developer (if applicable), or otherwise. E. & O.E.



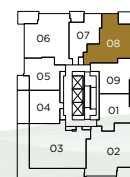
LEVELS 9-27 & 30-40



LEVEL 28



LEVEL 29



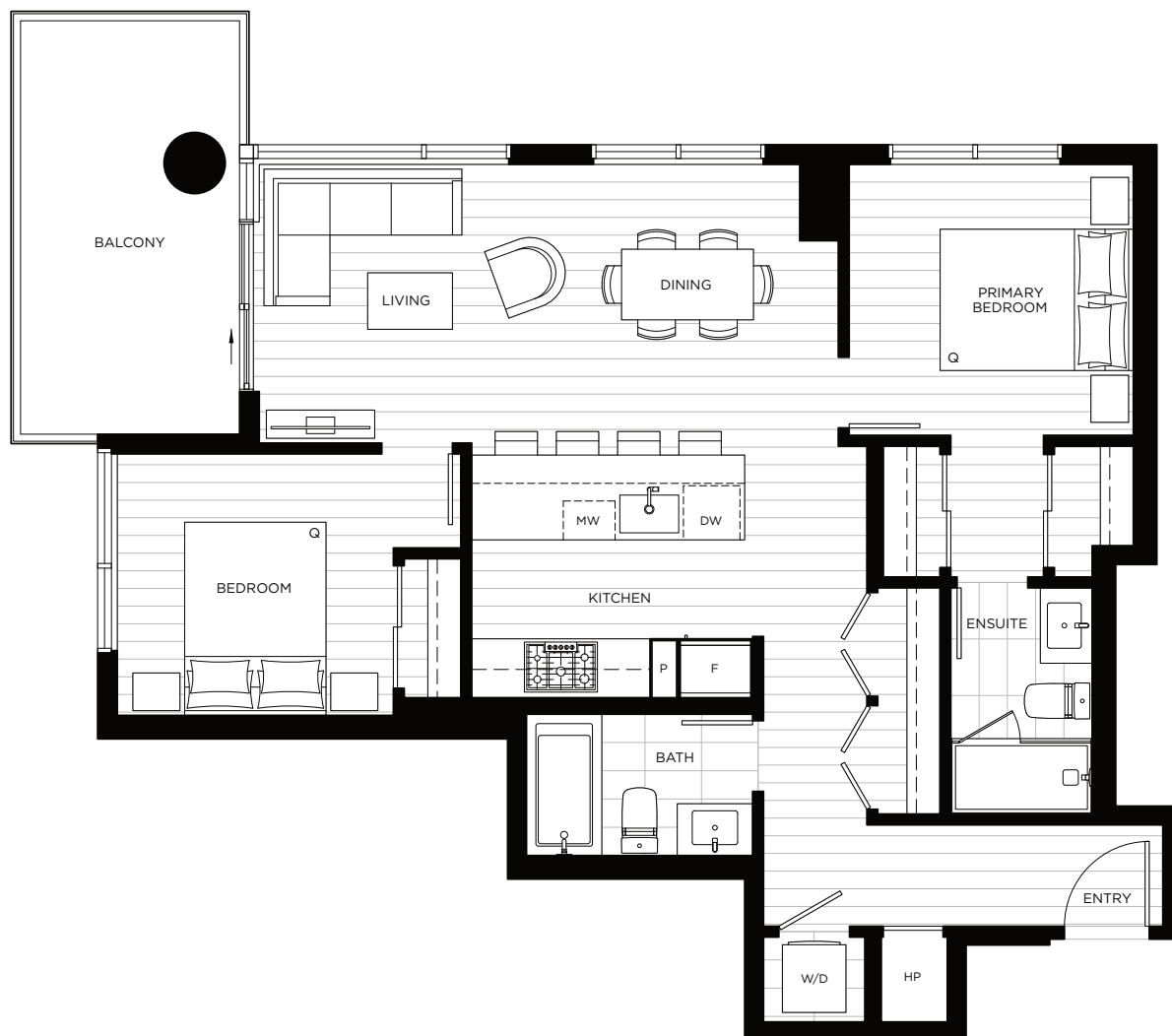
LEVEL 41

B2

2 BEDROOM, 2 BATH

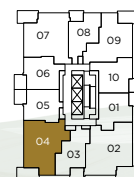
INTERIOR 873 SQ. FT.
EXTERIOR 122 SQ. FT.
TOTAL 995 SQ. FT.

JINJU



The developer reserves the right to make changes and modifications to the information contained herein. Floorplans and floorplates are subject to change without notice. Please contact a developer sales representative for details. The developer may also make such further development modifications as are permitted by the disclosure statement, as may be amended, the contract of purchase and sale between a purchaser and developer (if applicable), or otherwise, E. & O.E.

0 1 2 3 4 5 10 FEET



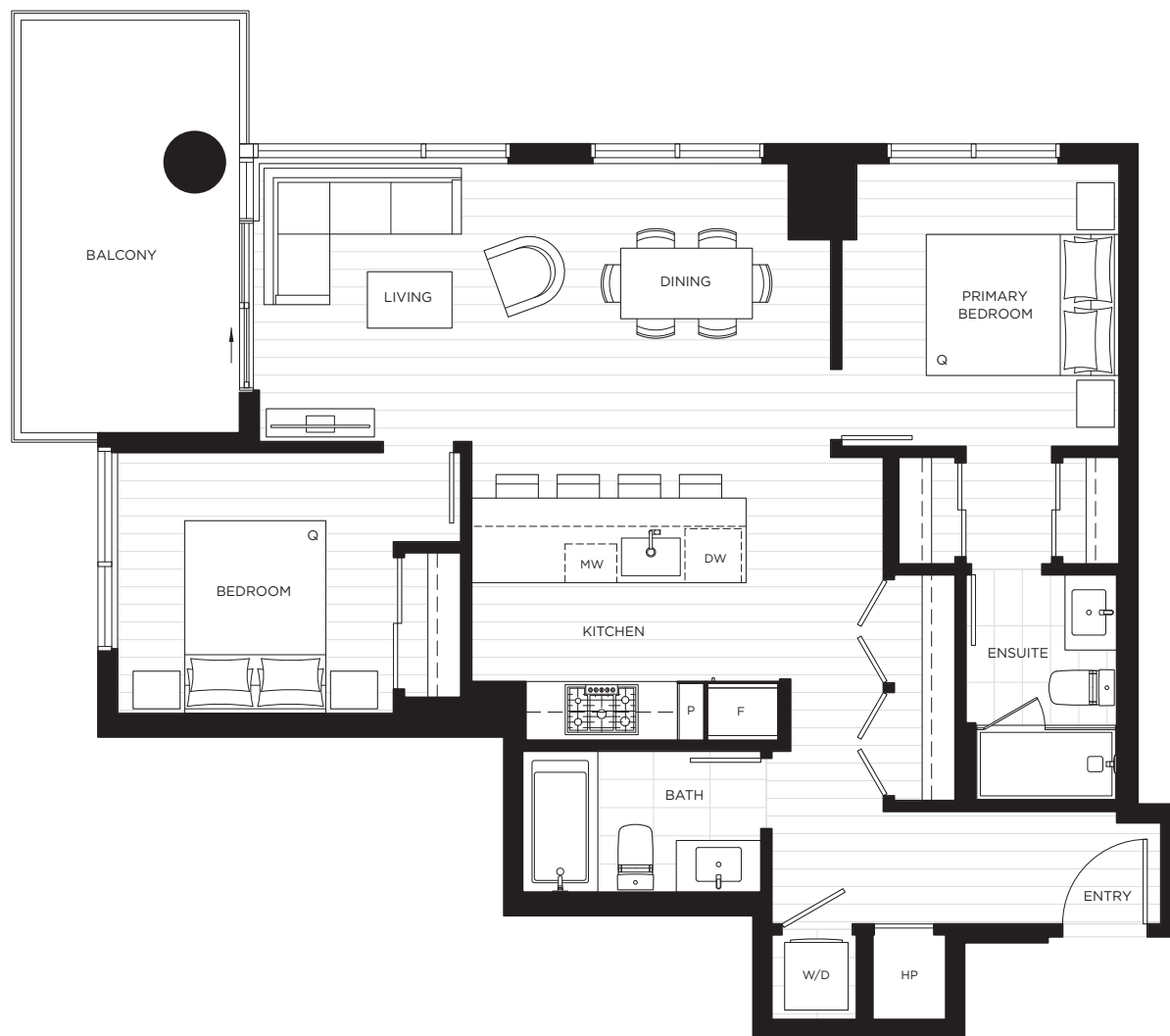
LEVELS 9-27 & 30-40

B3

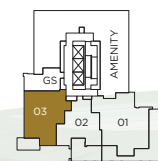
2 BEDROOM, 2 BATH

INTERIOR 889 SQ. FT.
EXTERIOR 122 SQ. FT.
TOTAL 1,011 SQ. FT.

JINJU



The developer reserves the right to make changes and modifications to the information contained herein. Floorplans and floorplates are subject to change without notice. Please contact a developer sales representative for details. The developer may also make such further development modifications as are permitted by the disclosure statement, as may be amended, the contract of purchase and sale between a purchaser and developer (if applicable), or otherwise, E. & O.E.



LEVEL 3

C

JUNIOR 3 BEDROOM, 2 BATH

INTERIOR 874 SQ. FT.
EXTERIOR 116 SQ. FT.
TOTAL 990 SQ. FT.

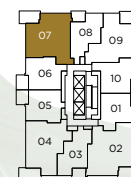
JINJU



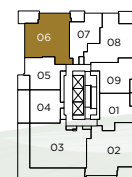
Anthem



The developer reserves the right to make changes and modifications to the information contained herein. Floorplans and floorplates are subject to change without notice. Please contact a developer sales representative for details. The developer may also make such further development modifications as are permitted by the disclosure statement, as may be amended, the contract of purchase and sale between a purchaser and developer (if applicable), or otherwise. E. & O.E.



LEVELS 9-27 & 30-40



LEVEL 41

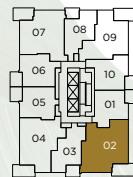
D 3 BEDROOM, 2 BATH

INTERIOR 954 SQ. FT.
 EXTERIOR 140 SQ. FT.
 TOTAL 1,094 SQ. FT.

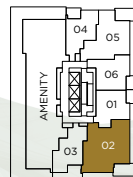
JINJU



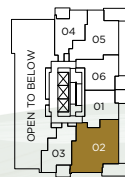
The developer reserves the right to make changes and modifications to the information contained herein. Floorplans and floorplates are subject to change without notice. Please contact a developer sales representative for details. The developer may also make such further development modifications as are permitted by the disclosure statement, as may be amended, the contract of purchase and sale between a purchaser and developer (if applicable), or otherwise. E. & O.E.



LEVELS 9-27 & 30-40



LEVEL 28



LEVEL 29

D1

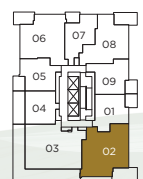
3 BEDROOM, 2 BATH

INTERIOR 964 SQ. FT.
EXTERIOR 140 SQ. FT.
TOTAL 1,104 SQ. FT.

JINJU



The developer reserves the right to make changes and modifications to the information contained herein. Floorplans and floorplates are subject to change without notice. Please contact a developer sales representative for details. The developer may also make such further development modifications as are permitted by the disclosure statement, as may be amended, the contract of purchase and sale between a purchaser and developer (if applicable), or otherwise, E. & O.E.



LEVEL 41

D2

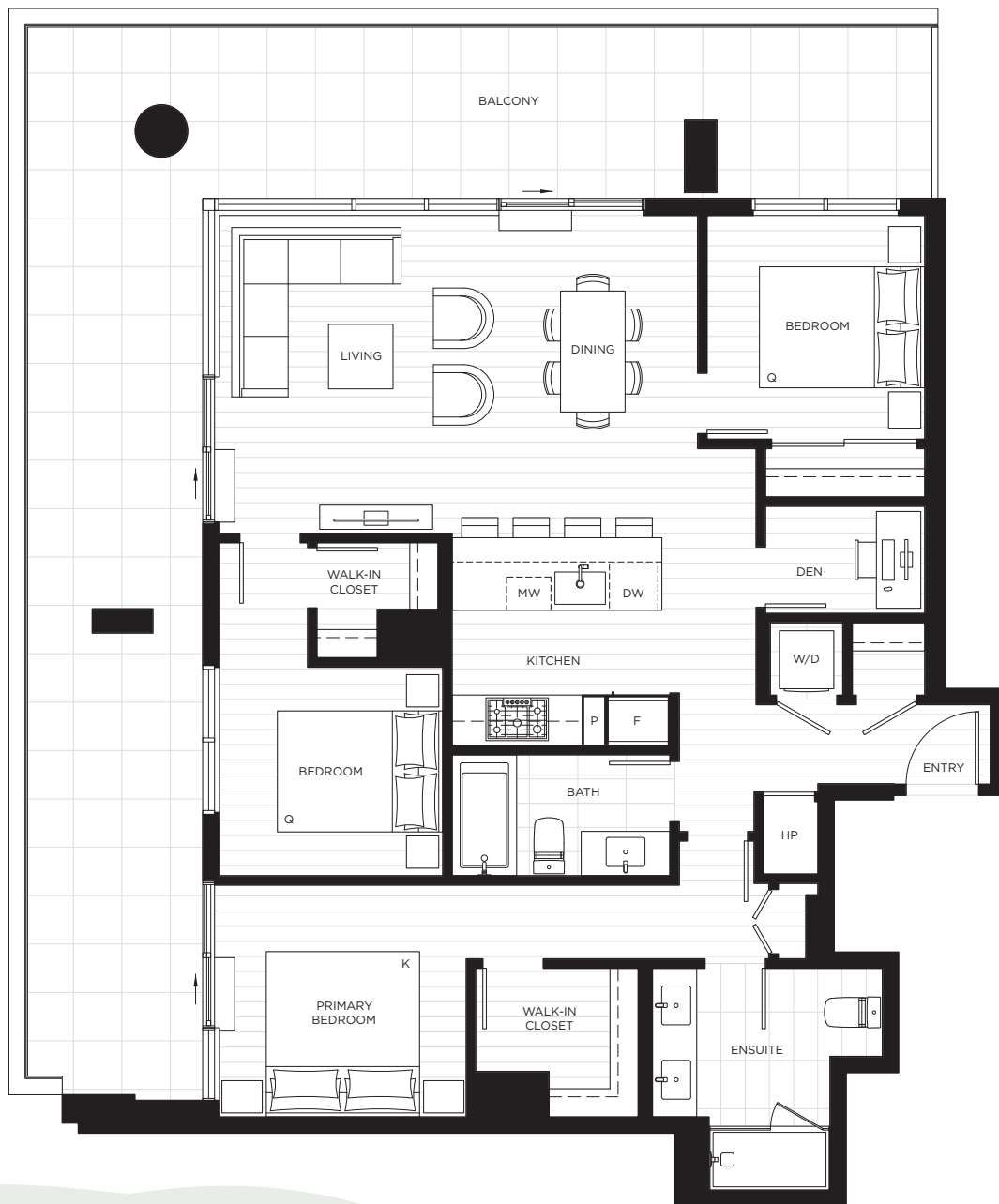
3 BEDROOM + DEN, 2 BATH

INTERIOR 1,122 SQ. FT.

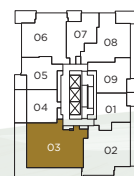
EXTERIOR 559 SQ. FT.

TOTAL 1,681 SQ. FT.

JINJU



The developer reserves the right to make changes and modifications to the information contained herein. Floorplans and floorplates are subject to change without notice. Please contact a developer sales representative for details. The developer may also make such further development modifications as are permitted by the disclosure statement, as may be amended, the contract of purchase and sale between a purchaser and developer (if applicable), or otherwise. E. & O.E.



LEVEL 41

D3

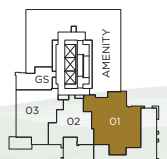
3 BEDROOM, 2 BATH

INTERIOR 1,164 SQ. FT.
EXTERIOR 648 SQ. FT.
TOTAL 1,812 SQ. FT.

JINJU



The developer reserves the right to make changes and modifications to the information contained herein. Floorplans and floorplates are subject to change without notice. Please contact a developer sales representative for details. The developer may also make such further development modifications as are permitted by the disclosure statement, as may be amended, the contract of purchase and sale between a purchaser and developer (if applicable), or otherwise. E. & O.E.



LEVEL 3

PH1

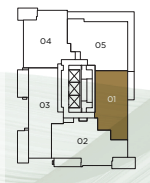
2 BEDROOM, 2.5 BATH

INTERIOR 1,048 SQ. FT.
EXTERIOR 94 SQ. FT.
TOTAL 1,142 SQ. FT.

JINJU



Anthem 



LEVEL 42

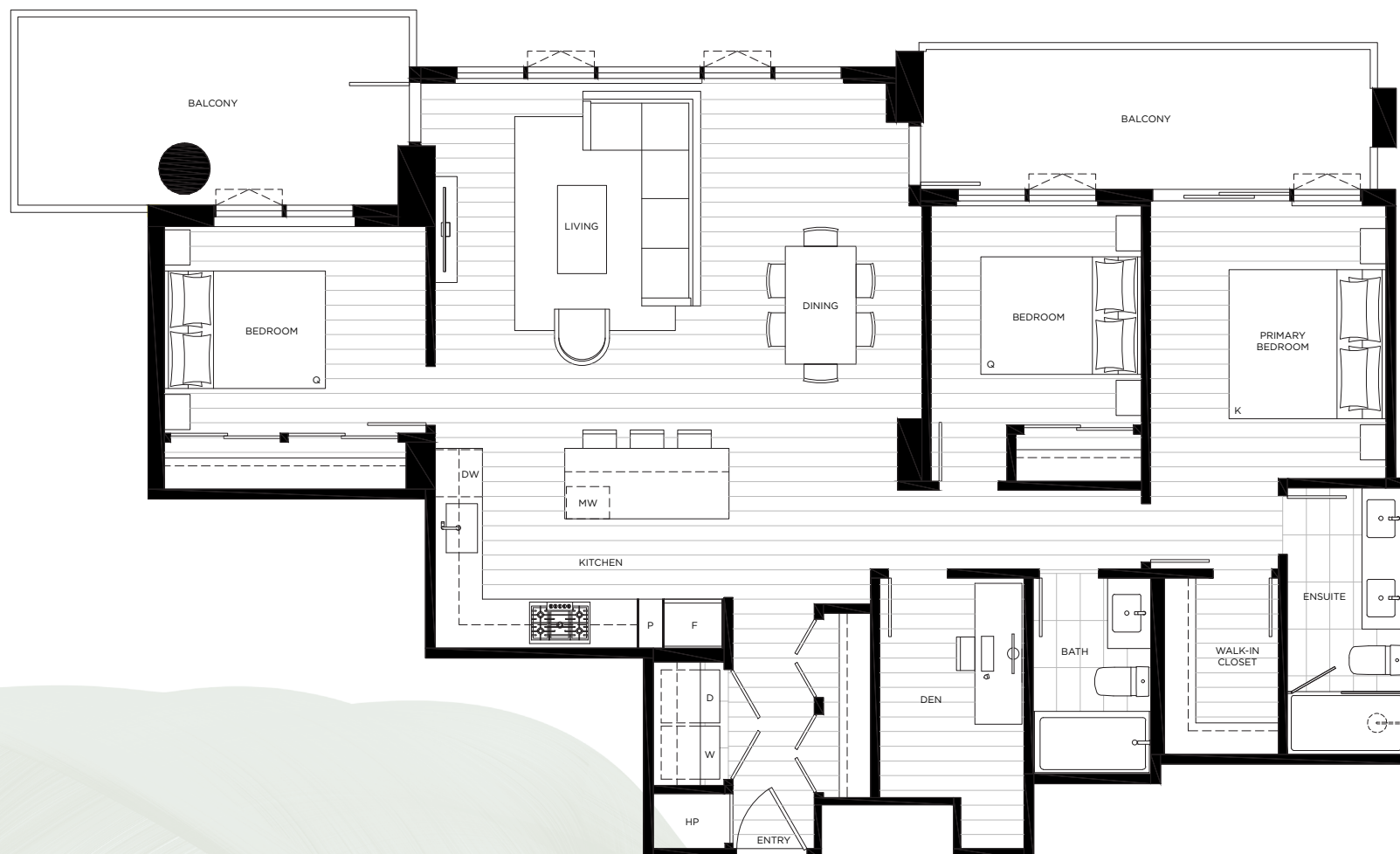
The developer reserves the right to make changes and modifications to the information contained herein. Floorplans and floorplates are subject to change without notice. Please contact a developer sales representative for details. The developer may also make such further development modifications as are permitted by the disclosure statement, as may be amended, the contract of purchase and sale between a purchaser and developer (if applicable), or otherwise. E. & O.E.

PH2

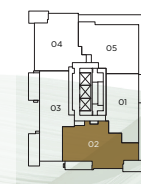
3 BEDROOM + DEN, 2 BATH

INTERIOR 1,285 SQ. FT.
EXTERIOR 256 SQ. FT.
TOTAL 1,541 SQ. FT.

JINJU



Anthem



LEVEL 42

The developer reserves the right to make changes and modifications to the information contained herein. Floorplans and floorplates are subject to change without notice. Please contact a developer sales representative for details. The developer may also make such further development modifications as are permitted by the disclosure statement, as may be amended, the contract of purchase and sale between a purchaser and developer (if applicable), or otherwise. E. & O.E.

PH3

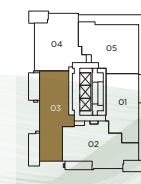
3 BEDROOM, 2.5 BATH

INTERIOR 1,269 SQ. FT.
EXTERIOR 355 SQ. FT.
TOTAL 1,624 SQ. FT.

JINJU



Anthem



LEVEL 42

The developer reserves the right to make changes and modifications to the information contained herein. Floorplans and floorplates are subject to change without notice. Please contact a developer sales representative for details. The developer may also make such further development modifications as are permitted by the disclosure statement, as may be amended, the contract of purchase and sale between a purchaser and developer (if applicable), or otherwise. E. & O.E.

PH4

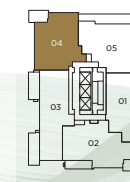
2 BEDROOM + DEN, 2.5 BATH

INTERIOR 1,186 SQ. FT.
EXTERIOR 111 SQ. FT.
TOTAL 1,297 SQ. FT.

JINJU



Anthem



LEVEL 42

The developer reserves the right to make changes and modifications to the information contained herein. Floorplans and floorplates are subject to change without notice. Please contact a developer sales representative for details. The developer may also make such further development modifications as are permitted by the disclosure statement, as may be amended, the contract of purchase and sale between a purchaser and developer (if applicable), or otherwise. E. & O.E.

PH5

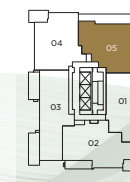
3 BEDROOM, 2.5 BATH

INTERIOR 1,305 SQ. FT.
EXTERIOR 495 SQ. FT.
TOTAL 1,800 SQ. FT.

JINJU



Anthem



LEVEL 42

The developer reserves the right to make changes and modifications to the information contained herein. Floorplans and floorplates are subject to change without notice. Please contact a developer sales representative for details. The developer may also make such further development modifications as are permitted by the disclosure statement, as may be amended, the contract of purchase and sale between a purchaser and developer (if applicable), or otherwise. E. & O.E.

TH1

2 BEDROOM, 2.5 BATH

INTERIOR 1,137 SQ. FT.
EXTERIOR 153 SQ. FT.
TOTAL 1,290 SQ. FT.

JINJU



Anthem



LEVEL 1

The developer reserves the right to make changes and modifications to the information contained herein. Floorplans and floorplates are subject to change without notice. Please contact a developer sales representative for details. The developer may also make such further development modifications as are permitted by the disclosure statement, as may be amended, the contract of purchase and sale between a purchaser and developer (if applicable), or otherwise. E. & O.E.

TH2

3 BEDROOM, 2.5 BATH

INTERIOR 1,213 SQ. FT.
EXTERIOR 182 SQ. FT.
TOTAL 1,395 SQ. FT.

JINJU



Anthem



LEVEL 1

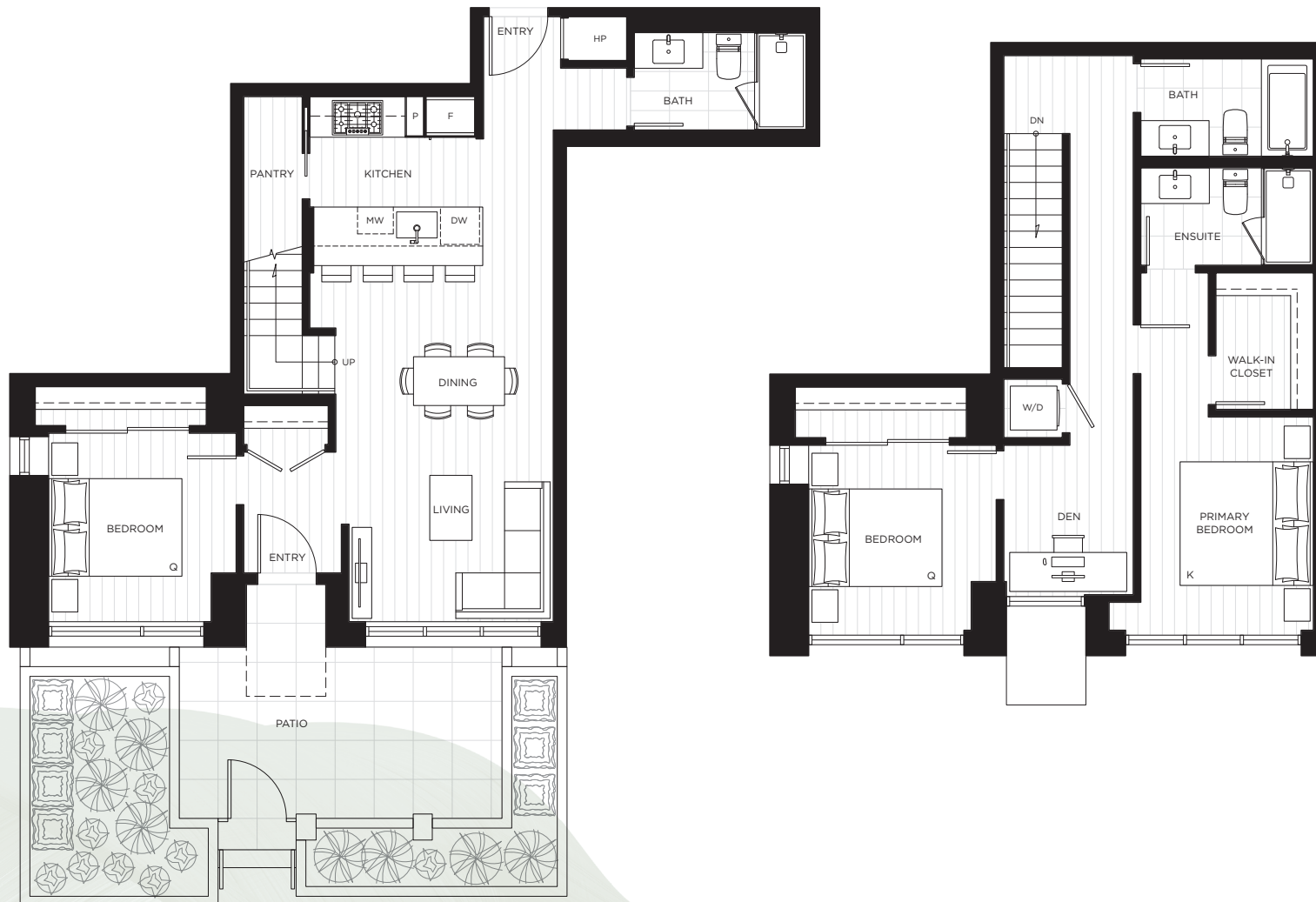
The developer reserves the right to make changes and modifications to the information contained herein. Floorplans and floorplates are subject to change without notice. Please contact a developer sales representative for details. The developer may also make such further development modifications as are permitted by the disclosure statement, as may be amended, the contract of purchase and sale between a purchaser and developer (if applicable), or otherwise. E. & O.E.

TH3

3 BEDROOM + DEN, 3 BATH

INTERIOR 1,331 SQ. FT.
EXTERIOR 181 SQ. FT.
TOTAL 1,512 SQ. FT.

JINJU



Anthem



LEVEL 1

The developer reserves the right to make changes and modifications to the information contained herein. Floorplans and floorplates are subject to change without notice. Please contact a developer sales representative for details. The developer may also make such further development modifications as are permitted by the disclosure statement, as may be amended, the contract of purchase and sale between a purchaser and developer (if applicable), or otherwise. E. & O.E.